

# PRODUCT OVERVIEW

# PRESSURE MEASUREMENT

MAC Sensor Co.,LTD.  
Changsha City,Hunan,China  
<http://www.macsensor.com>  
TEL: +86-731-89975636 / 89975645

## P801 Standard Industrial Micro-gas Differential Pressure Transmitter



### Characteristics

- ☆ Min 0-250pa gas pressure range
- ☆ Advanced digital temperature compensation.
- ☆ UL94V-0 flame retardant grade
- ☆ Anti-humidity and water proof
- ☆ IP65 enclosure
- ☆ ia II CT4 explosion-proof grade optional
- ☆ CE approved

### Applications

- ★ Process control
- ★ Environmental contamination control
- ★ Pipe pressure monitoring
- ★ Medical equipment and devices
- ★ Oven pressure boost and ventilation control
- ★ Purification project
- ★ Underground ventilatio

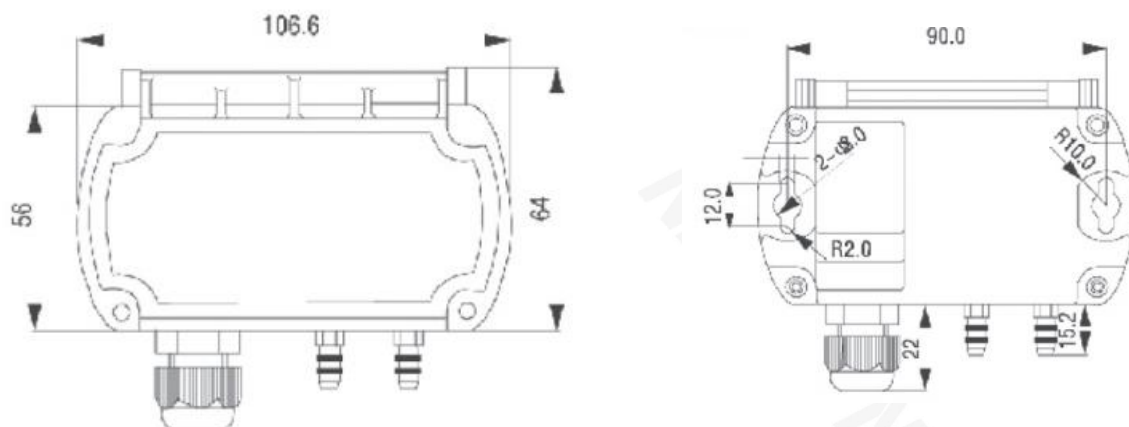
### Profiles

P801 micro-gas pressure transmitter is expertly crafted for precision monitoring of air and gas differential pressure or gauge pressure in commercial and OEM applications, ensuring 0.25% accuracy. Our low-range model offers a reliable solution for low-pressure sensing (0-250pa to 0-25kPa) using SETRA variable capacitance sensing technology. With argon arc welded components and advanced circuit linearity, this transmitter boasts superior performance. Its compact, stable, and lightweight design, coupled with easy installation using Ø3mm screws, makes it ideal for measuring pressure or differential pressure in dry, non-corrosive gases. Widely utilized in electrical power, environmental protection, dust removal, textile, leak detection, and more.

## Specifications

| Model                 | P801  |         |        |          |       |
|-----------------------|---|---------|--------|----------|-------|
| Parameter             |   |         |        |          |       |
| Accuracy              | 1.0%F.S; 0.5%F.S; 0.25%F.S optional                       |         |        |          |       |
| Pressure Range        | 0-100Pa,0-250Pa,0-1250Pa,0-7500Pa                         |         |        |          |       |
| Safe overload         | 200% F.S.   |         |        |          |       |
| Burst Pressure        | 400% F.S.   |         |        |          |       |
| Long-term Stability   | ≤0.2%F.S/Year   |         |        |          |       |
| Working Temp.         | -18℃~+65℃   |         |        |          |       |
| Temp. compensation    | 5℃~65℃  |         |        |          |       |
| Zero Point Temp Drift | <0.06%F.S/℃   |         |        |          |       |
| Full Scale Temp Drift | <0.06%F.S/℃   |         |        |          |       |
| Medium compatible     | Air or non-conductive gas                                 |         |        |          |       |
| Electrical Wire       | 2 Wires   | 3 Wires |        | 4 wires  |       |
| Output                | 4~20mA  | 0~5V    | 0~10 V | 0.5-4.5V | RS485 |
| Power Supply          | 10-30VDC  |         |        |          |       |
| Electrical connection | PG-9 or PG-13.5 cable locking device or 1/2" wire opening |         |        |          |       |
| Pressure connection   | 3/16" gas mouth with 1/4" hose                            |         |        |          |       |
| Housing material      | Aluminum  |         |        |          |       |
| IP Rating             | IP65  |         |        |          |       |

## Dimension and Drawing



## Part Number Code Table For Pressure Range

|     |         |     |          |     |            |  |  |
|-----|---------|-----|----------|-----|------------|--|--|
| 000 | 0~250Pa | 009 | 0~600Pa  | 018 | 0~1800Pa   |  |  |
| 001 | 0~260Pa | 010 | 0~700Pa  | 019 | 0~1900Pa   |  |  |
| 002 | 0~270Pa | 011 | 0~800Pa  | 020 | 0~2000Pa   |  |  |
| 003 | 0~280Pa | 012 | 0~900Pa  | 021 | 0~2100Pa   |  |  |
| 004 | 0~300Pa | 013 | 0~1000Pa | 022 | 0~2200Pa   |  |  |
| 005 | 0~350Pa | 014 | 0~1200Pa | 023 | 0~2300Pa   |  |  |
| 006 | 0~400Pa | 015 | 0~1400Pa | 024 | 0~2400Pa   |  |  |
| 007 | 0~450Pa | 016 | 0~1600Pa | 025 | 0~2500Pa   |  |  |
| 008 | 0~500Pa | 017 | 0~1700Pa | X   | Customized |  |  |

## Order Information

| P/N<br>Selection    | P801<br>(Model)   | 010        | E5                         | S17         | K | 1 | 1 | 32 | P1 |
|---------------------|---|------------|----------------------------|-------------|---|---|---|----|----|
| Range               | Refer to <i>PART NUMBER CODE TABLE FOR RESSURE RANGE</i> on previous page and select your requested range code here.            |            |                            |             |   |   |   |    |    |
| Output              | E7=0-10V (3 wire)      E5=4-20mA(2 wire)<br>E6=0-5V(3 wire)      E8=0.5-4.5V(3 wire)<br>E11=RS485 Modbus RTU<br>X=By customized |            |                            |             |   |   |   |    |    |
| Power Supply        | S17=10~30Vdc   X=By customized  |            |                            |             |   |   |   |    |    |
| Pressure unit       | A=Pa  | K=kPa      | B=bar                      |             |   |   |   |    |    |
| Accuracy            | 0=1.0%F.S   | 1=0.5%F.S  | 2=0.25%F.S (by customized) |             |   |   |   |    |    |
| Cable Length        | 0=Cable 0m  | 1=Cable 1m | 2=Cable 2m                 | X=Cable x m |   |   |   |    |    |
| Pressure Connection | 32=3/16" gas mouth with 1/4" hose<br>X= By Customized   |            |                            |             |   |   |   |    |    |
| Max Static Pressure | P1=Standard by DP range   |            |                            |             |   |   |   |    |    |