



FLOW SERIES

☒ ONE-STOP SOLUTION

☒ ONE-STOP SERVICE

RADAR FLOW METER

Radar Wave Flow Meter MRCM600, MRCM600-R

PROFILE

MRCM-600 series radar wave flow meters use K-band planar radar technology for velocity and water level measurement in a non-contact manner. According to the built-in software model and algorithm, it calculates and outputs real-time instantaneous flow and cumulative flow at a cross-section. It features low power consumption and high reliability. And the measurement is not affected by sediment, temperature, pollutants and floating objects on the water surface.

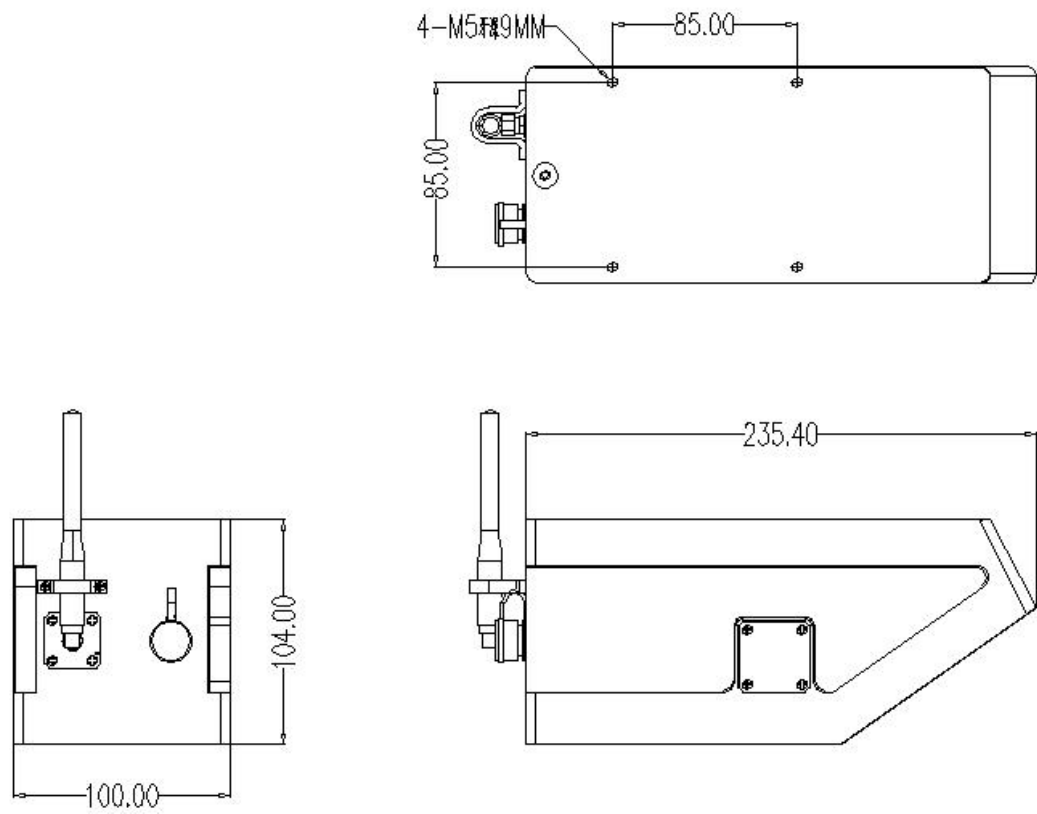


It can be used for velocity, water level and flow measurement of rivers, lakes, tides, reservoir gates, underground pipe networks, irrigation canals; in water treatment, such as urban water supply, sewage monitoring; for flow measurement in water inlet and drainage flow monitoring, etc.

FEATURES

1. Rainproof mode available;
2. Various data, such as velocity, water level, and flow rate can be measured;
3. Non-contact measurement applied, combined with cross-section parameters to calculate the flow rate, not affected by wind, temperature, haze, sediment, floating objects, etc.
4. Expandable array type multi-point flow measurement, by configuring a set of flow meters and multiple sets of velocity meters, the flow measurement of a wide section can be realized;
6. Software can be configured, the parameters can be configured according to actual needs.
7. Applicable for multiple cross-sections such as trapezoid, round, U-shaped, etc.; it's simple and convenient for parameter setting of the cross-section;

DIMENSIONS



SPECIFICATIONS

Parameter	MRCM600,MRCM600-R
Velocity Measurement System	
Measuring Principle	Planar microstrip array antenna CW+FMCW
Operating Mode	Manual, automatic, telemetry
Operating temperature	-30~80℃
Operating Voltage	7-32VDC;5.5-32VDC(Optional)
Working current	For 12VDC input, operating mode: <150mA Standby mode: <1mA
Ambient temperature output	Temperature resolution 0.1℃; temperature measurement accuracy ±1℃
IP Rating	IP68
Radar Water Level Sensor	
Radar power	100mW
Radar frequency	80Ghz(7-40m) 60GHz(under 7m)
Measuring range	40 meters
Measurement accuracy	±3mm;±2mm
Antenna angle	11°
Radar Wave Velocity Meter	
Radar power	100mW
Radar frequency	24GHz
Max measuring range	40m
Velocity range	0.03~20m/s
Velocity measurement accuracy	±0.01m/s;±1%FS
Antenna angle	12°
Measuring direction	Automatic recognition of water flow direction,built-in vertical angle correction
Data transmission system	
Data transmission	RS485 (default), RS232 (reserved), 4~20mA; 433MHz/4G /NB-IoT (optional)
Notes: MRCM600 is the standard version, MRCM600-R is the RTU version that supports parameter adjustment by Bluetooth, wireless configuration and maintenance by mobile phone and equipment remote upgrade	